

# IGS - Aurich

Neubau  
Sekundarstufe 1

Vorentwurf  
Stand: 30.08.2017



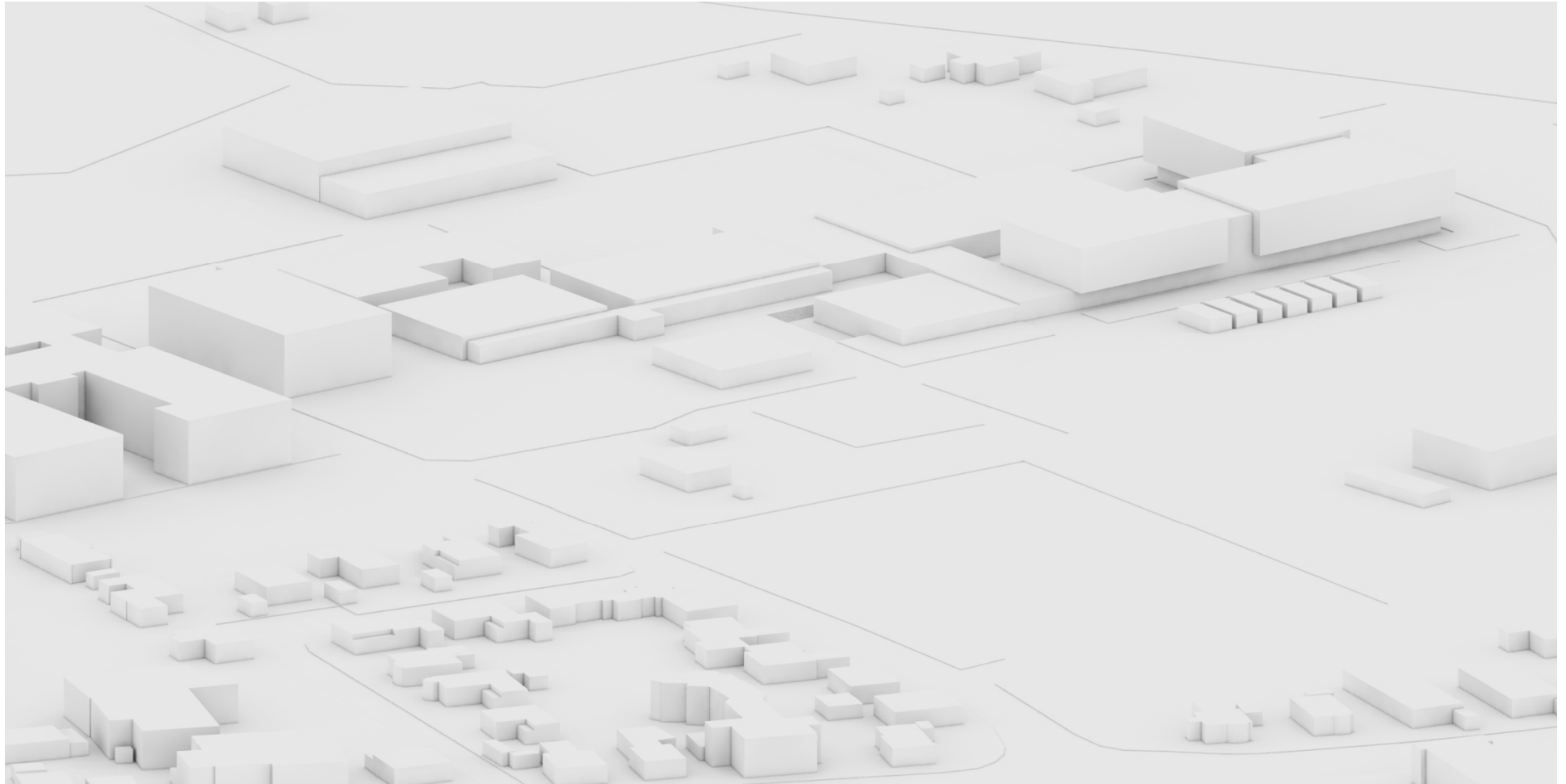


Lageplan alt



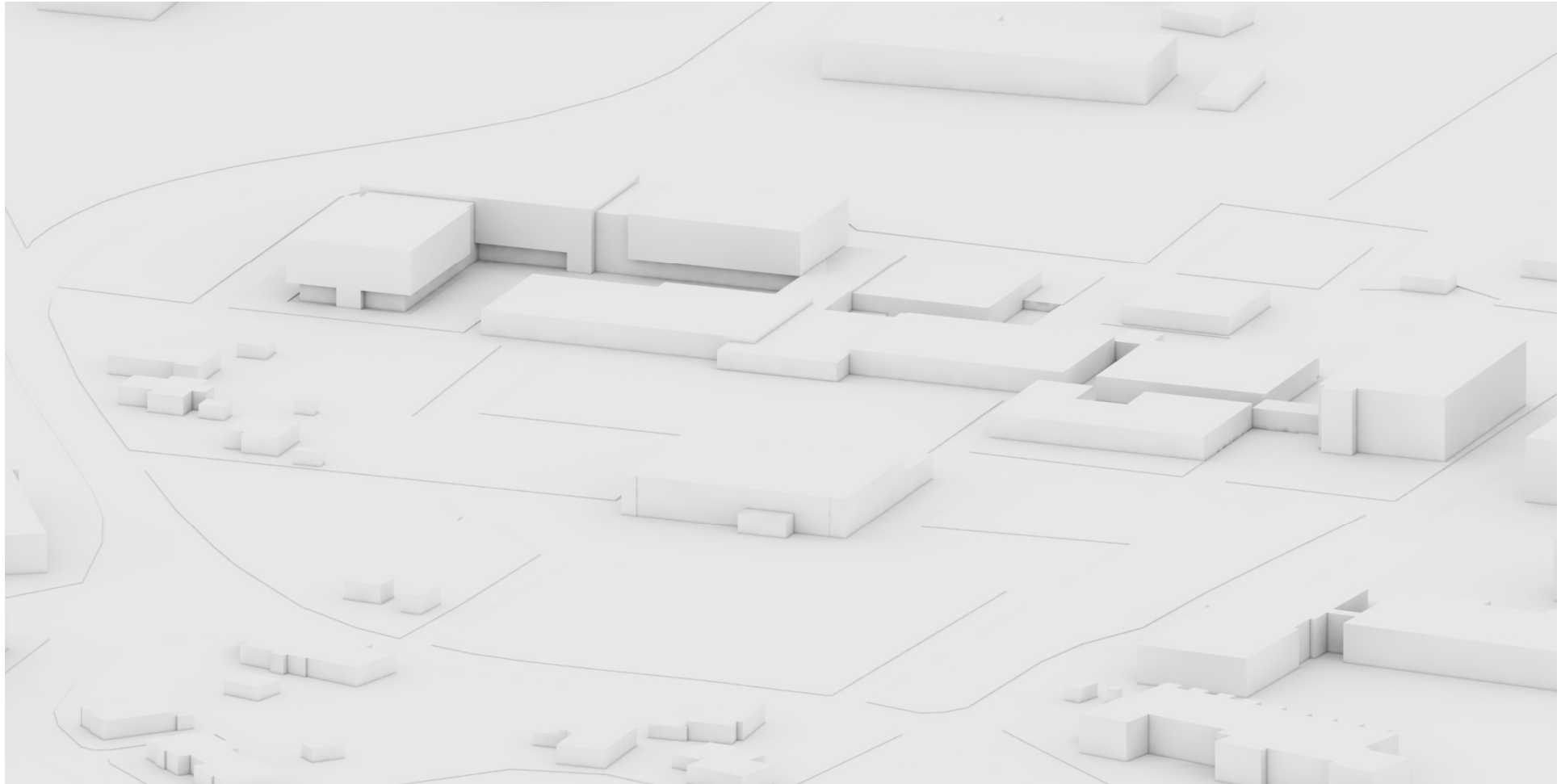
Lageplan neu





Perspektive von Süd-Ost





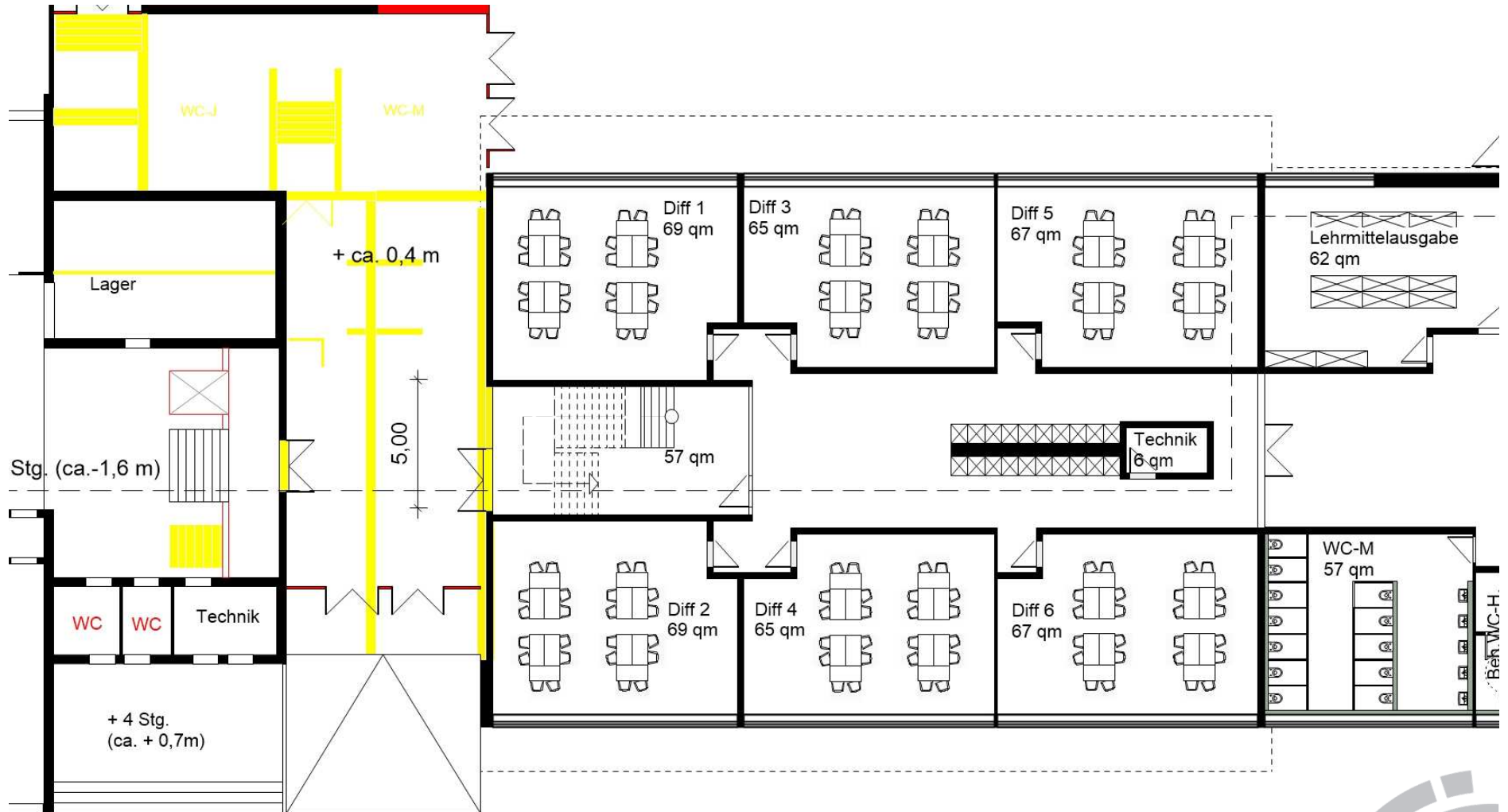
Perspektive von Süd-West





Grundriss Erdgeschoss

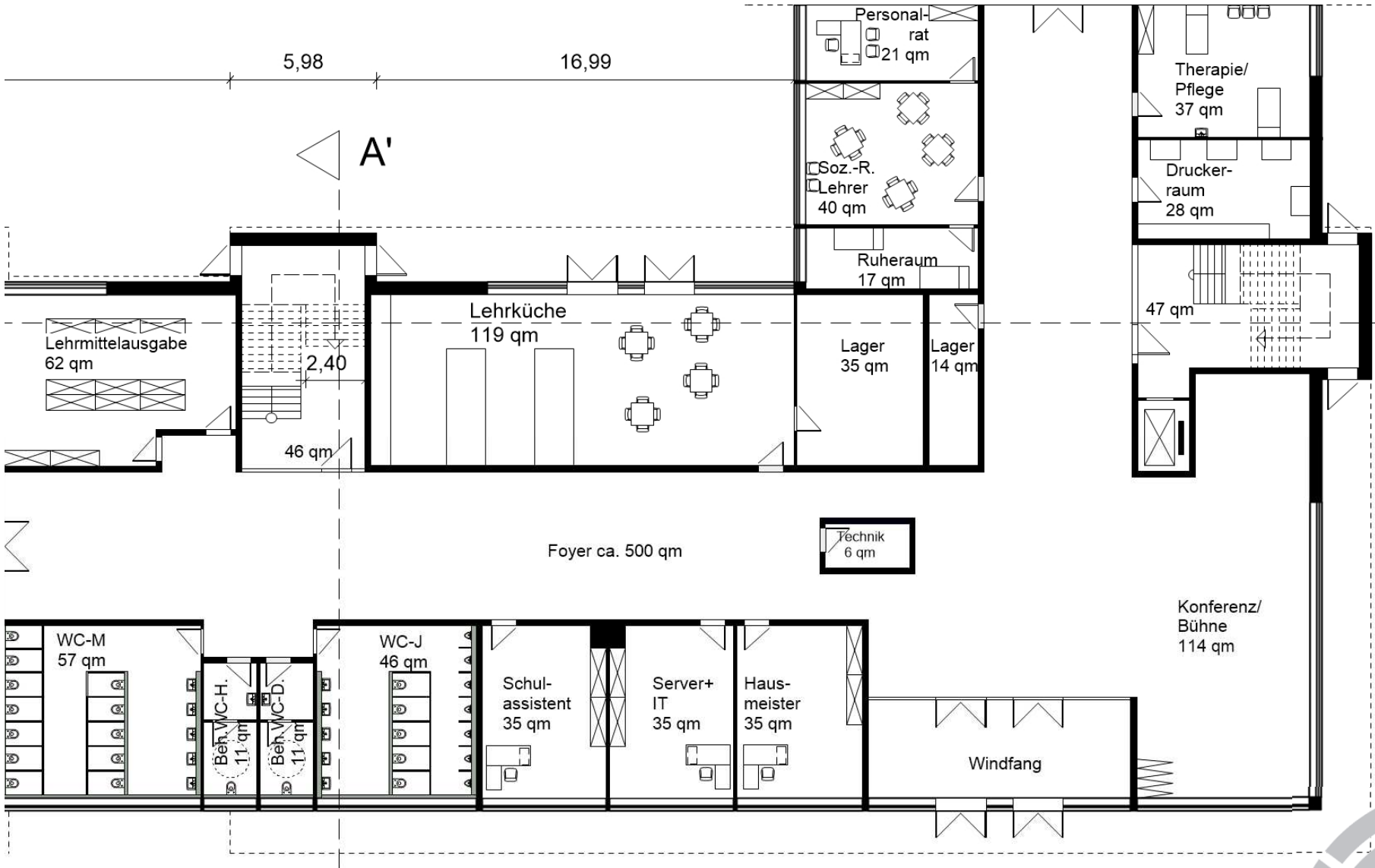




Ausschnitt Differenzierungsbereich

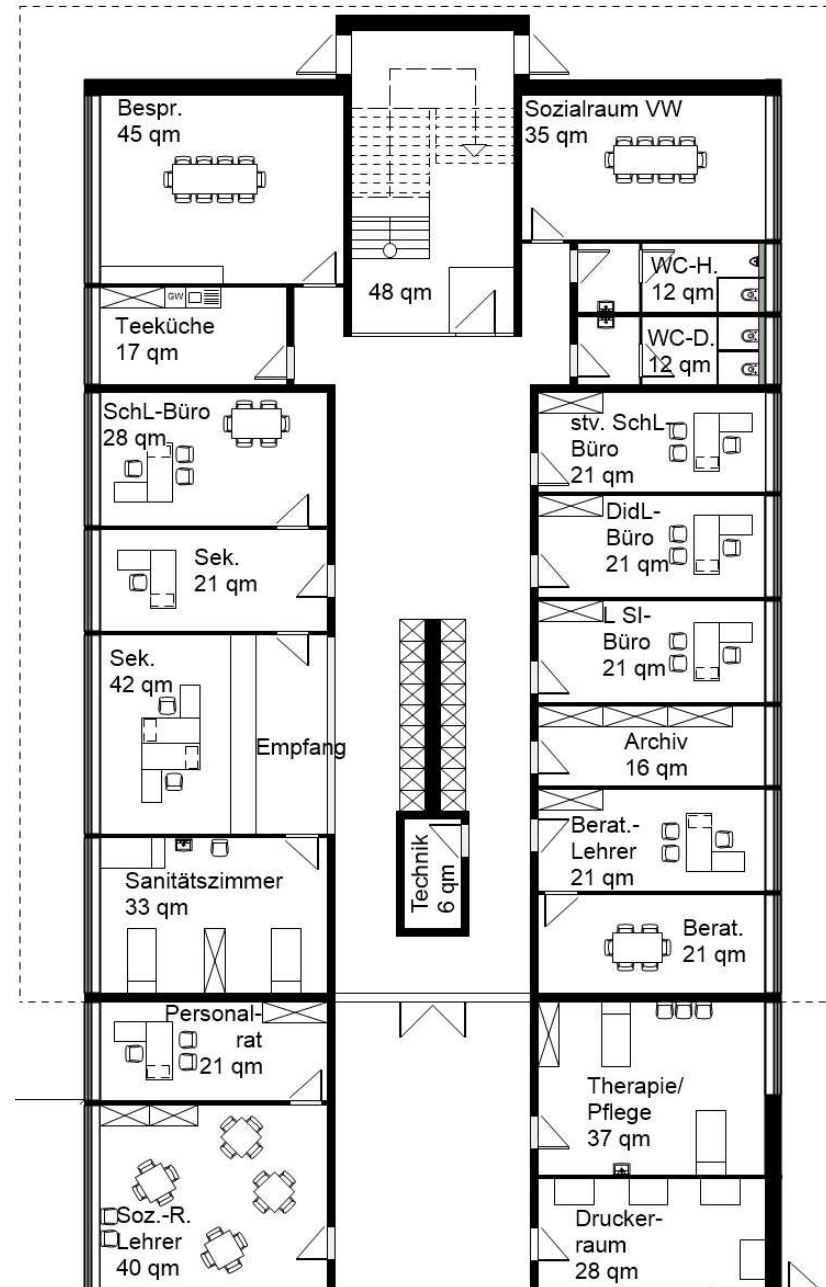






Ausschnitt Pausenhalle



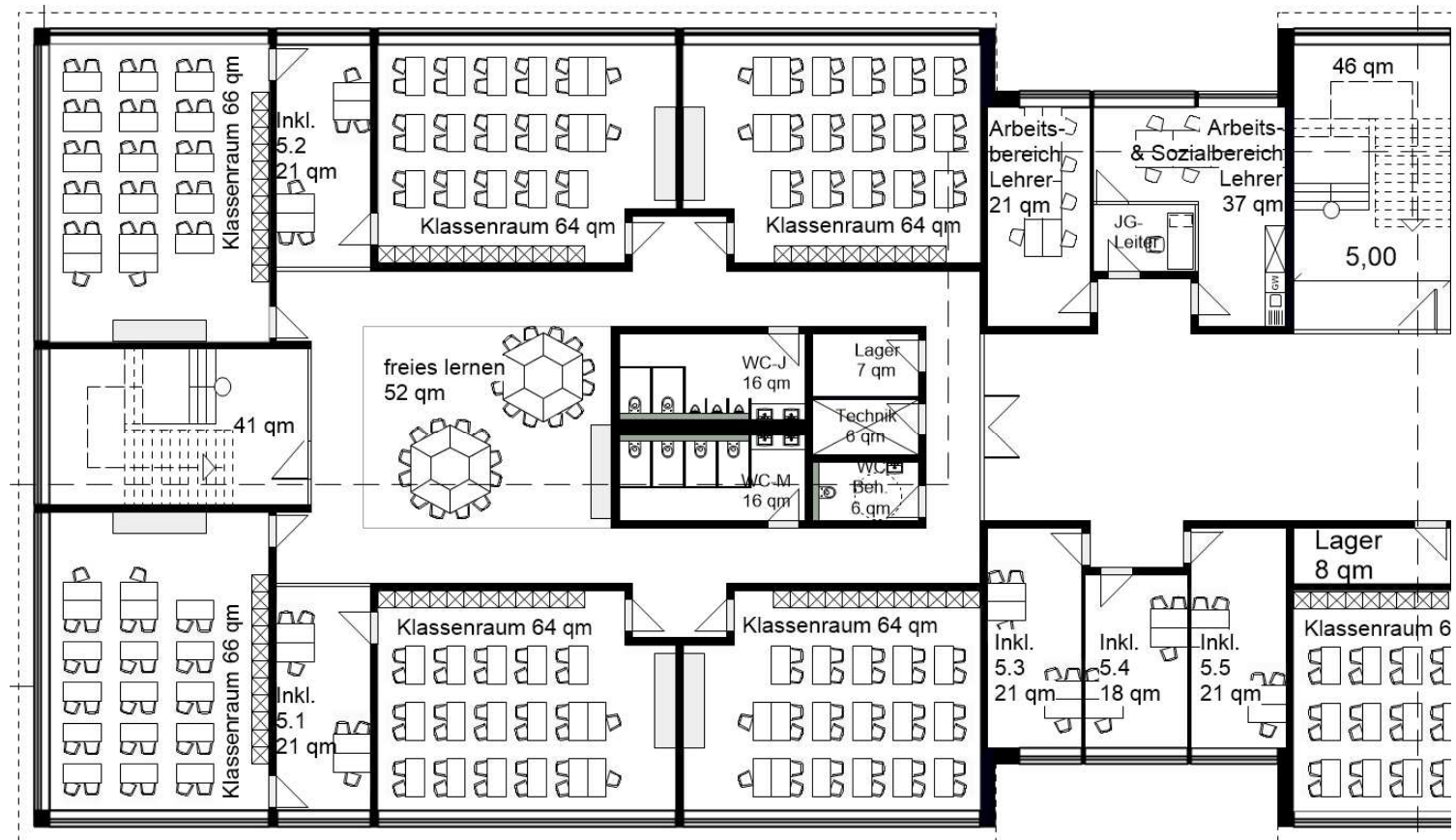


Ausschnitt Verwaltung



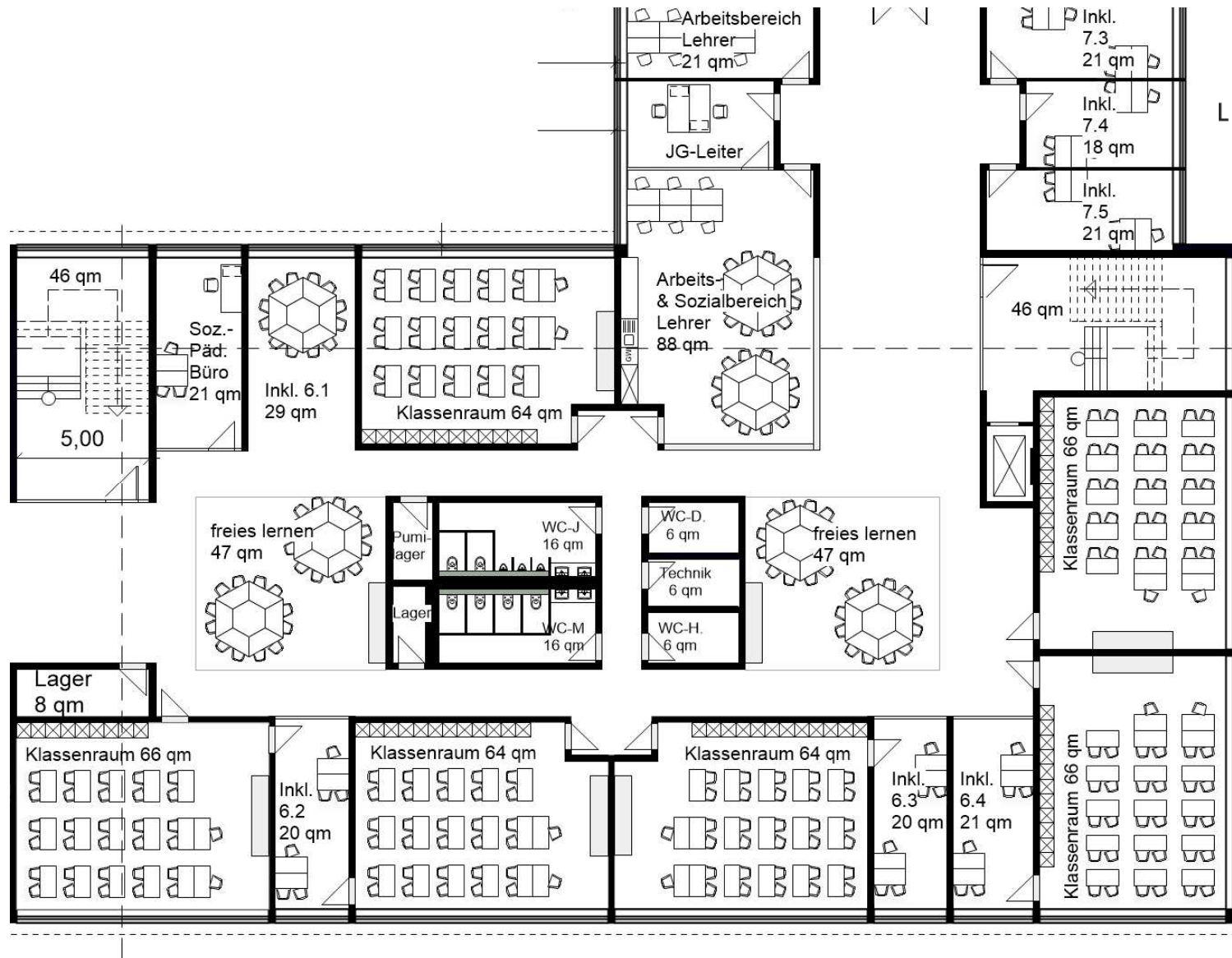






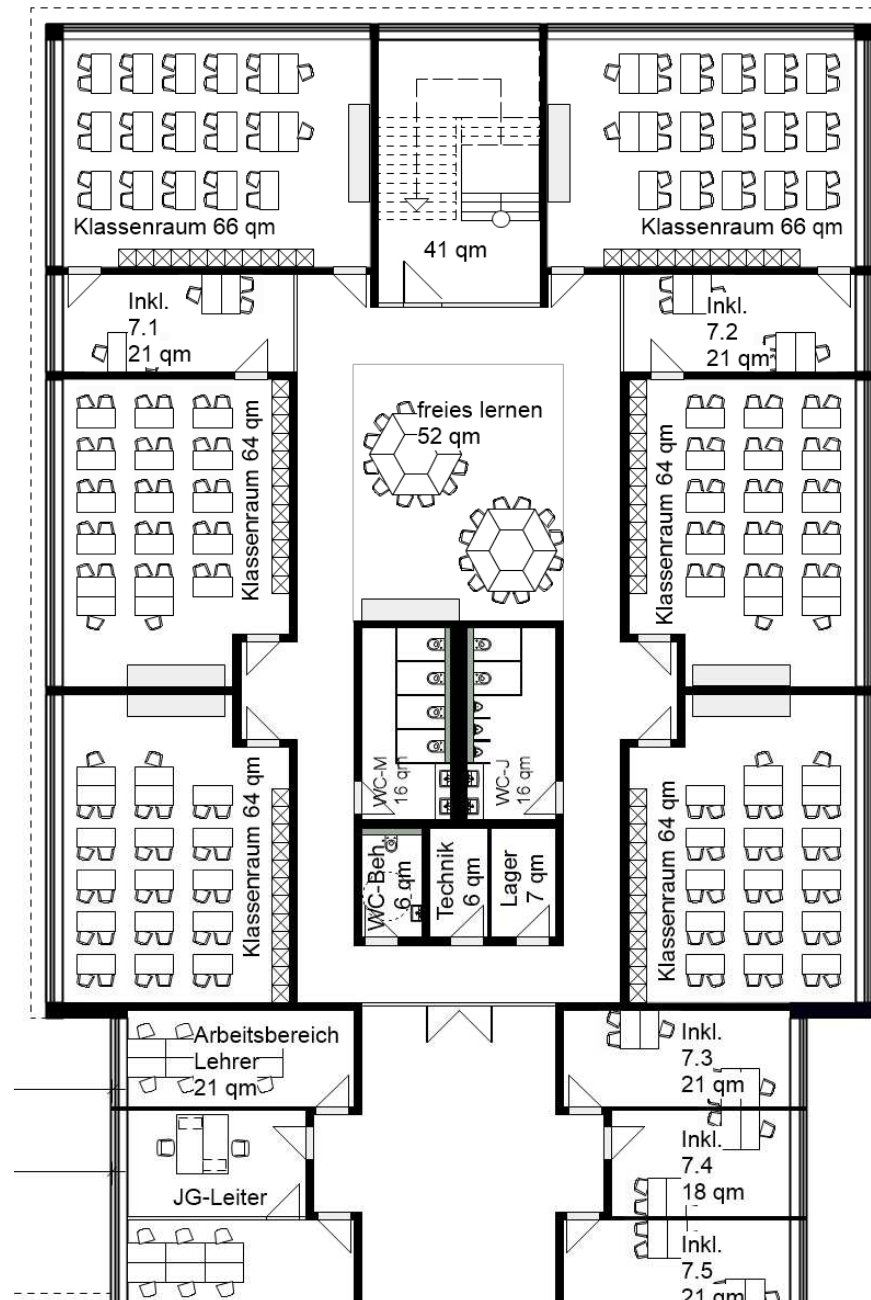
Ausschnitt Jahrgangsbereich 1





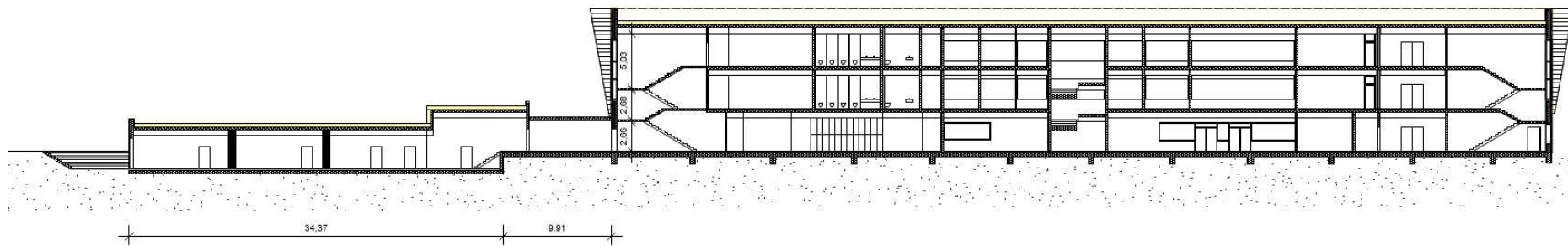
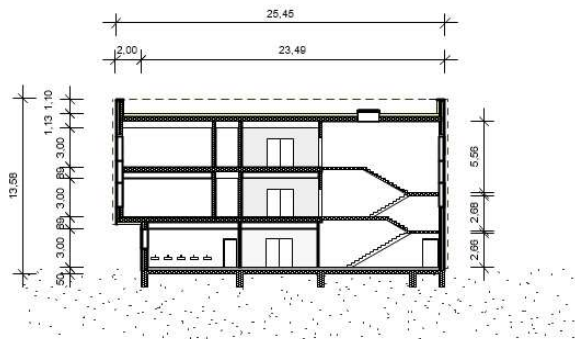
Ausschnitt Jahrgangsbereich 2





Ausschnitt Jahrgangsbereich 3

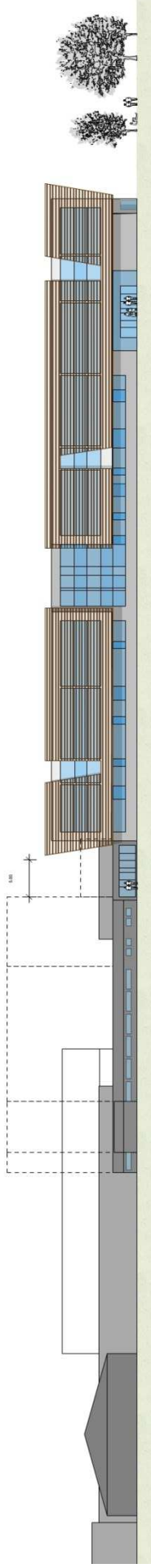




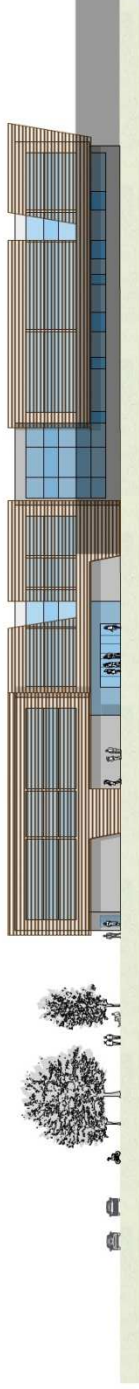
Schnitte







Ansicht Ost



Ansicht West



Ansicht Süd

Ansicht Nord



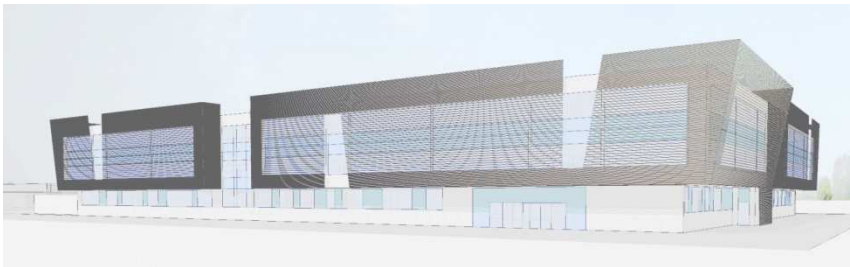
Beispielfassade: College Aubagne (fr)



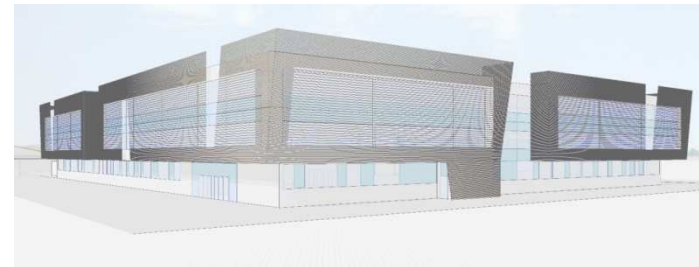




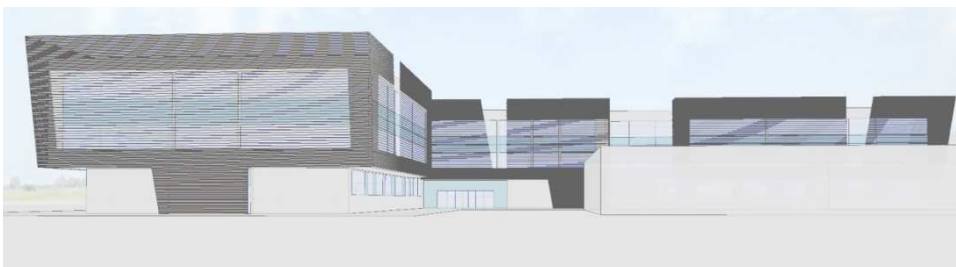
Perspektive Süd-Ost



Perspektive Ost



Perspektive Nord-Ost

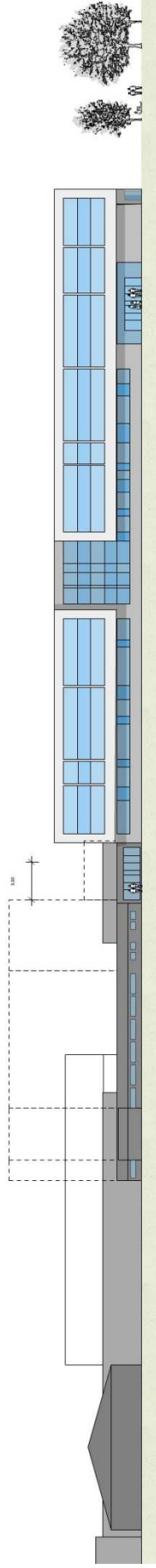


Perspektive West

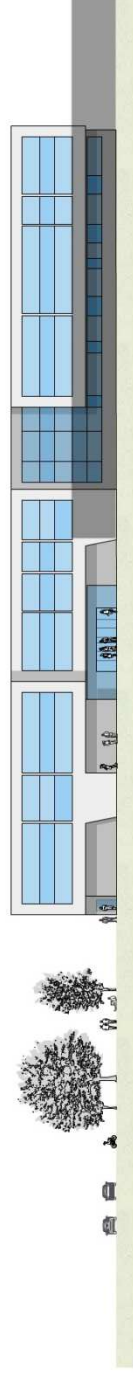


Vielen Dank für Ihre Aufmerksamkeit.





Ansicht Ost



Ansicht West



Ansicht Süd

Ansicht Nord

